



# TruNav Training Guide

---

TruNav



**Contents**

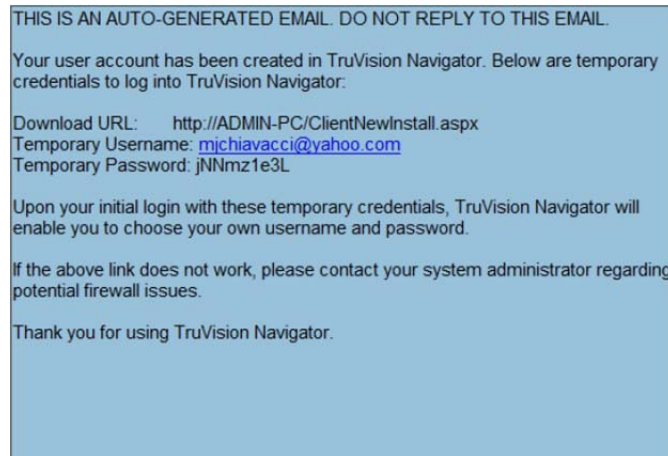
- Installing Client** ..... 3
  - Login** ..... 4
  - Overview** ..... 5
- Managing camera views** ..... 6
  - Standard video displays** ..... 6
  - Custom view** ..... 7
- PTZ Control** ..... 7
  - Controlling a PTZ camera** ..... 7
  - Locating video footage** ..... 8
  - Connection Manager** ..... 9
- Video Playback from disk:** ..... 10
- Contact Information** ..... 11

# TruNav

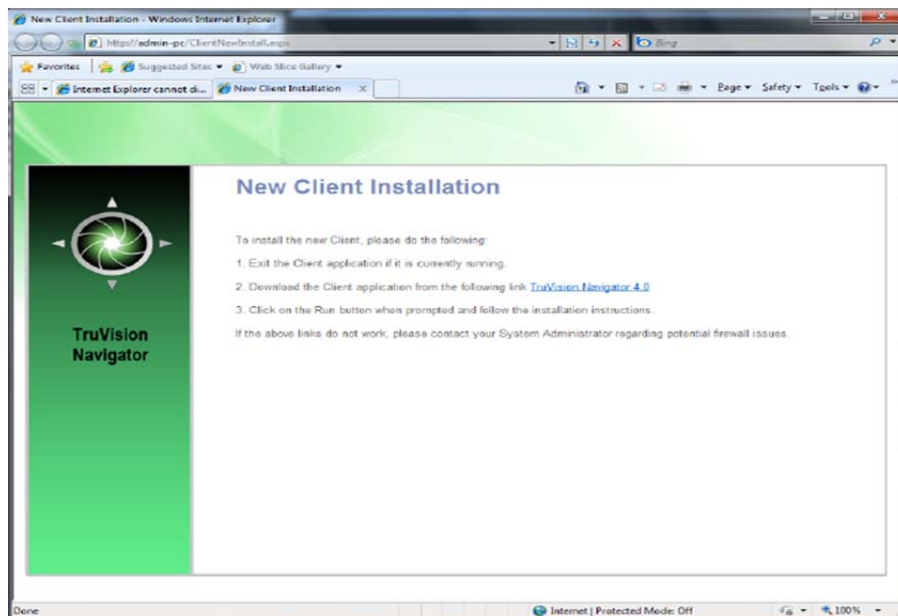
**\*Please Un-Install WaveReader from your computer before installing TruNav.**

## Installing Client

Once your account has been activated, you will receive an e-mail through Interact with a link to download the software, and your temporary login information.



Click on the Download URL link, it will open up a browser window for the Client Software Download.



Click the TruVision Navigator 4.0 link (in blue) to begin the download process. To view a video of the download process, go to: <http://info/TruNavClientUpgrade.htm>



Once download is complete, double-click on the TruNav shortcut Icon on your desktop.

In the login box, log in with the credentials you received in the e-mail.

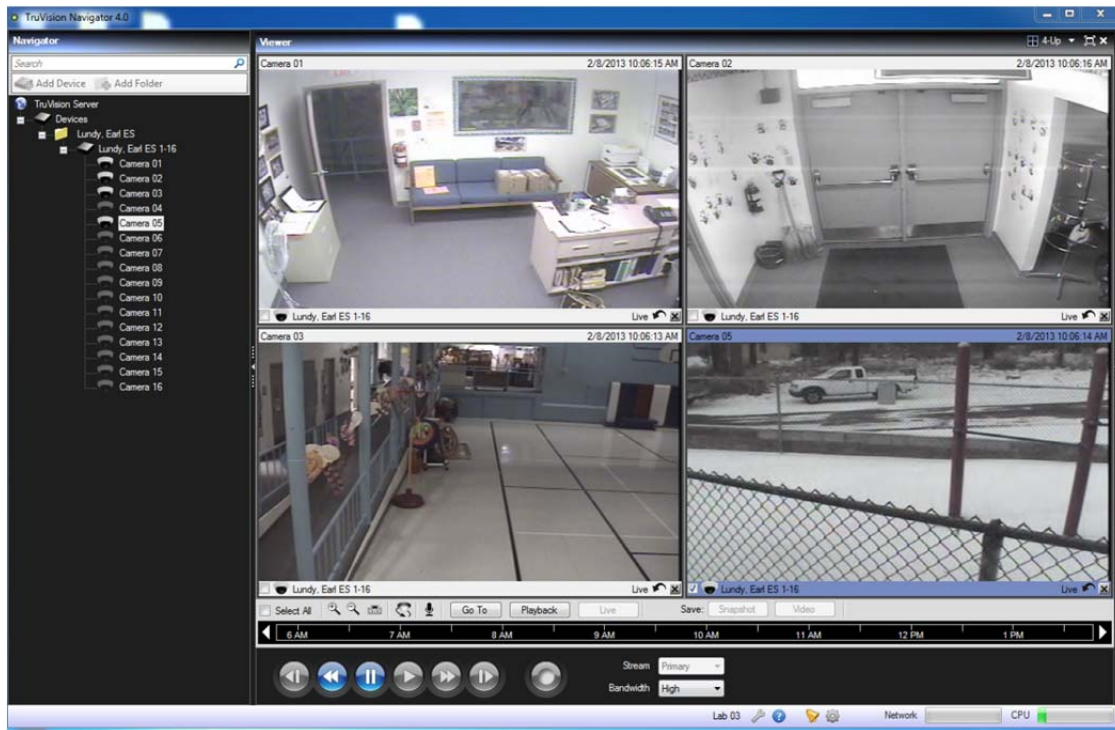


You will be prompted to change those credentials upon initial successful login.



You will also be prompted to provide a Challenge question and Response that, in the future, will allow you to reset your own password without administrator assistance.

# Overview



1. The Navigator Panel
2. The Viewer Panel
3. The Controller Panel

## Navigator

The **Navigator** panel allows you to access all of the DVRs and cameras in your system.

## Viewer

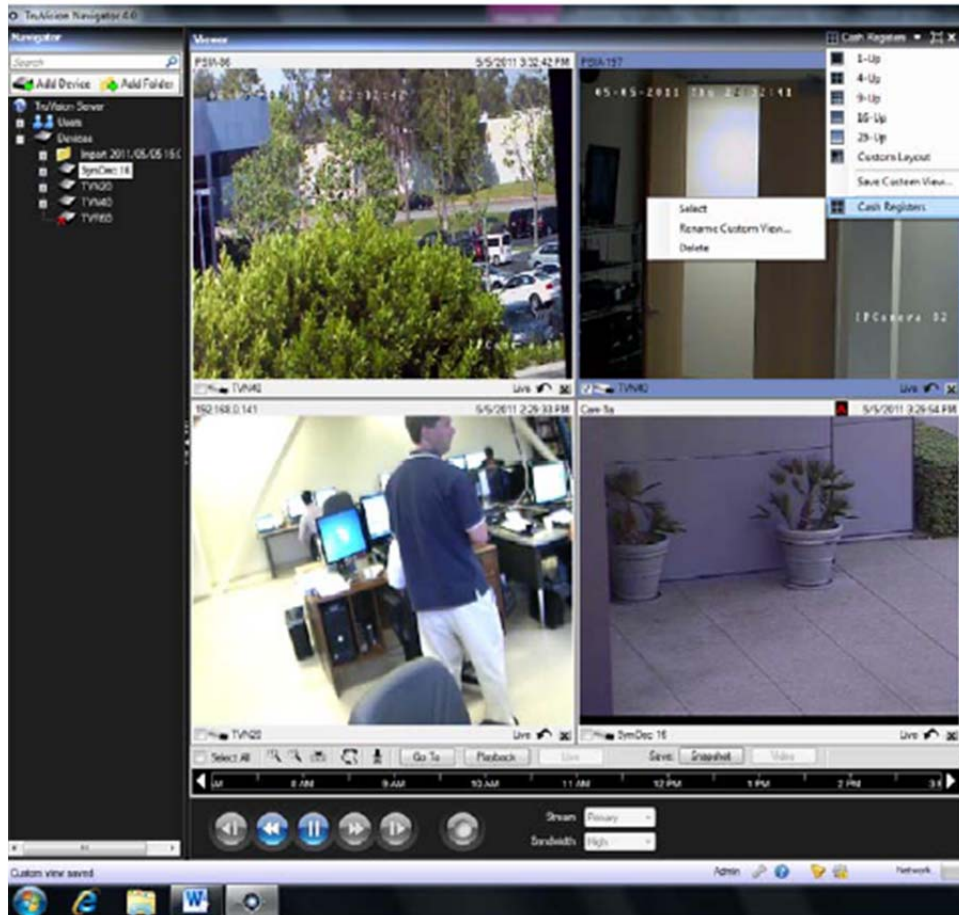
The **Viewer** panel allows you to view both live and recorded video from any camera in your system.

The multi-site feature allows you to view video from multiple cameras from different DVRs simultaneously in the **Viewer**.

## Controller

The **Controller** panel allows you to seek for key video points in time, as well as your playback and PTZ controls.

## Managing camera views



### Standard video displays

The **Viewer** panel header bar contains several options that allow you to display video in different ways:

**View Video Streams.** Select a tile layout you want to use to display video. Standard tile layouts include 1x1, 2x2, 3x3, 4x4, and 5x5. You can also use the 8-up custom tile layout that features 1 large video tile surrounded by 7 smaller ones.

**Toggle between single view and normal.** Double-click in the video tile to bring the video to full screen. Double-click in the video tile again to return to the grid view.

**Close All.**  Select this option to close all displayed video.

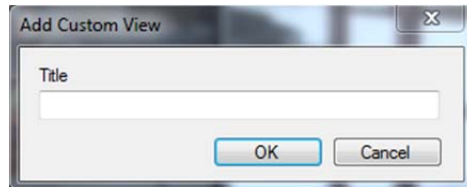
**Instant Replay.**  Click on the Instant Replay button to go from Live to Playback by a user-defined and a pre-configured time period (i.e. 5 minutes) for quick viewing of an incident.

## Custom view

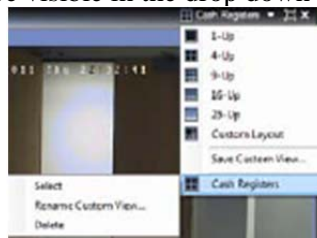
Custom views allow you to define and save multi-site view templates for future use. You can create as many custom views as you want. Custom views are available by selecting the **Custom View** option in the **Viewer** panel header bar. You can also rename and remove custom views using the same menu.

To define a custom view, do the following:

- 1) Load all the cameras you want to include in the **Viewer** panel.
- 2) Organize your cameras by dragging and dropping the video tile's status bar to other video tiles.
- 3) Click **Save Custom View** in the drop down located on the **Viewer** panel header bar.
- 4)



- 5) Name the view title in the *Title* field.
- 6) Click **OK**.
- 7) Close all videos.
- 8) Your **Custom View** will now be visible in the drop down grid selection menu.



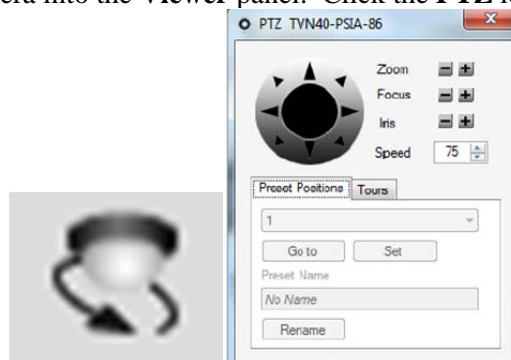
## PTZ Control

### Controlling a PTZ camera

A PTZ camera can PAN TILT or ZOOM.

To control a PTZ camera, do the following:

- 1) Load the PTZ Camera into the **Viewer** panel. Click the **PTZ** icon in the **Controller** panel.



*Use the directional pad to tell the camera which way to turn. Use the zoom, focus and iris buttons to make further adjustments to your view.*



## Using mouse PTZ controls within the viewing tile

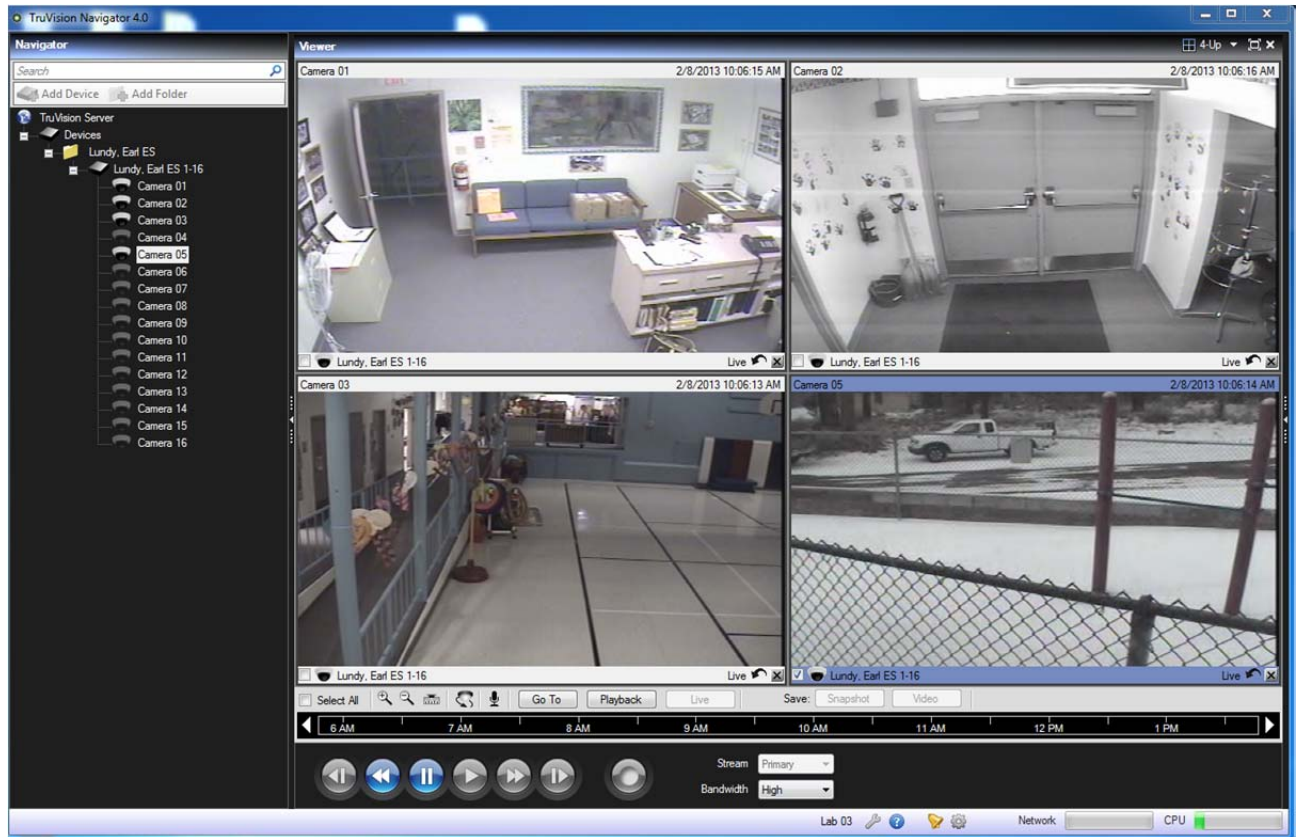
TruNav also supports mouse PTZ controls from within the Viewing Tile. To utilize this feature, do the following:

- 1 Place your cursor in the center of the **Viewing** tile.
- 2 Left-click and hold the mouse, then drag to the right-left-up-or down. Notice: the further from center the cursor gets, the faster the camera will move.

## Locating video footage

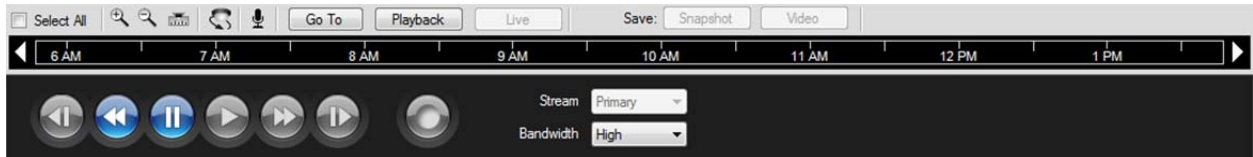
To locate video footage, do the following:

1. Drag and drop the cameras to the **Viewer** panel or double-click on the camera's name to display video in the **Viewer** panel.

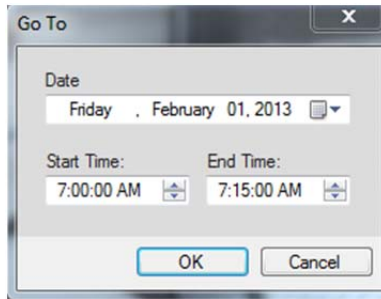


2. Select a camera in the **Viewer** panel by clicking on that video in the viewing tile. A blue frame should surround the selected video.





3. Click the “Go To” button to select the date and time you would like to begin your review, then click OK.



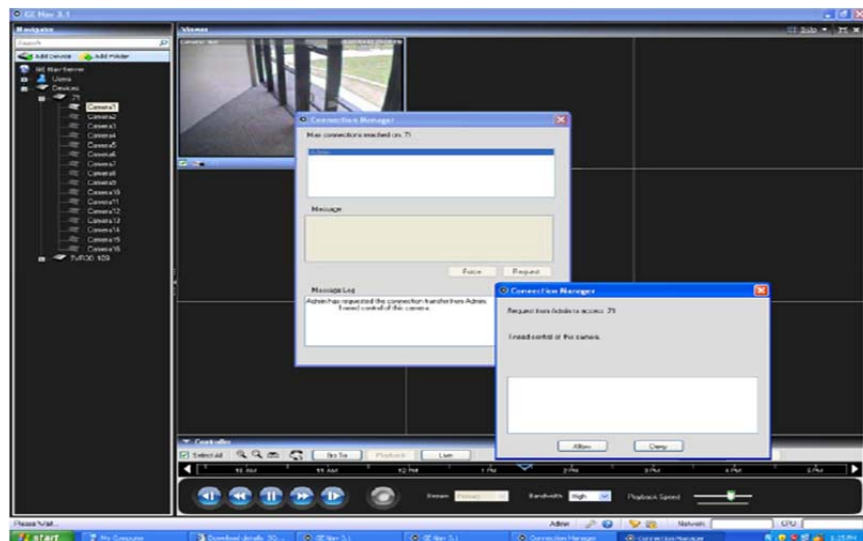
A blue seek triangle displays in the **Timeline** panel indicating where the selected video is playing in time.

To go to a different time on the timeline, drag and drop the blue seek triangle backwards or forwards along the timeline to locate the video. OR: Double-click on a point-in-time on the Timeline to playback selected video at that desired date /time. The video plays back in the **Viewer** panel.

Use the blue buttons at the bottom of the controller panel to Play, Pause, Rewind or view Frame-by-Frame.

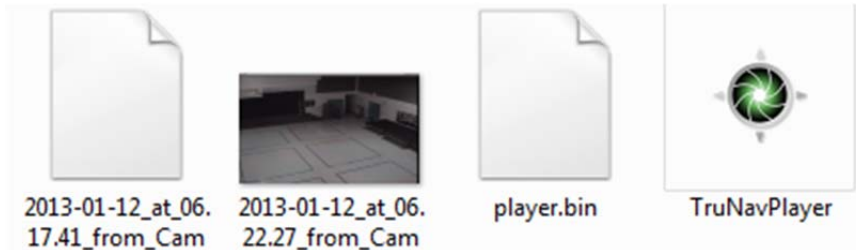
**NOTE:**

The first person logged into the recorder will have the priority connection to be able to PTZ and view video playback. Everyone that logs in after that will be able to view live video only. If you are not the first person logged into the recorder you will get the Connection Manager Messenger. You can high-light the username, type a message in the dialog box and click request to let them know you need access to the cameras.



## Video Playback from disk:

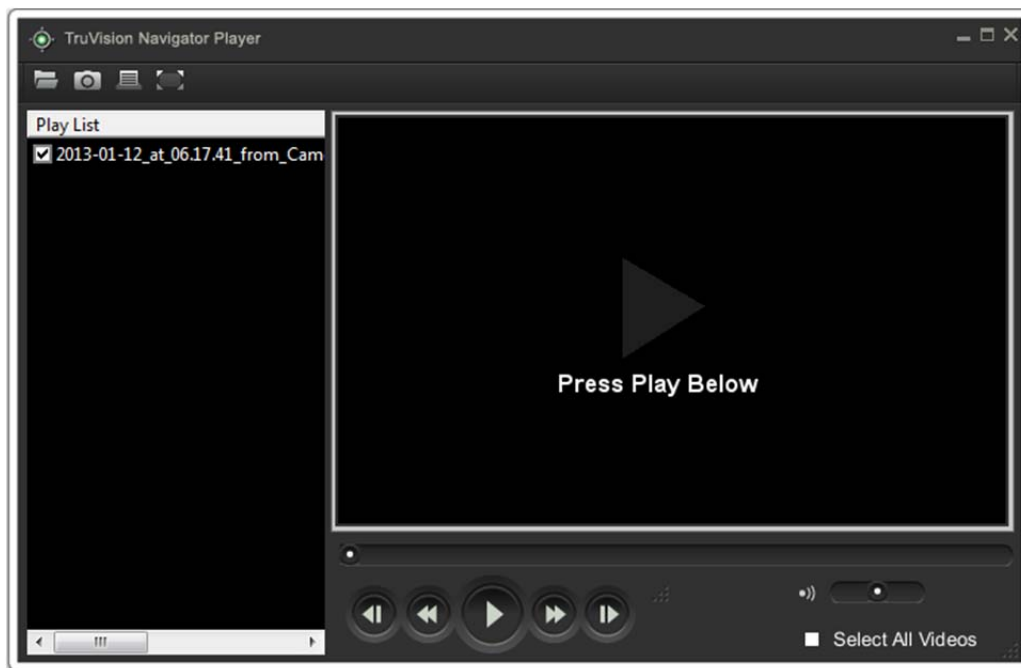
The saved video and standalone player will look like this:



Double Click on the TruNav Player icon to open the player.

Your saved video will be listed on the left of the screen.

The playlist is on the left side of the screen. Click the white check box next to the video wish to view, then click the play button at the bottom of the screen.



Once your video is playing, you can double click on the screen for individual camera viewing, or you can select multiview to see all your camera videos play at one time.

You can also use the control buttons to fast forward, rewind, frame advance, frame reverse, or pause.

# Contact Information



**If you need additional assistance, please  
contact us at:**



**Help Desk: 799-1048**

Or log onto <http://info.securitysystems.ccsd.net> to download clients and manuals.

**The CCSD Security Systems Help Desk is available M-F 7:00am to 3:30pm. If you are calling after normal hours, please leave a message and we will return your call during normal business hours.**

**Thank You.**

### 1.0 RECORD RETENTION TABLE:

Identification	Storage	Retention	Disposition	Protection
SPD2-W008	CCSDPD website	Minimum of 5 years	Hard copy filed in folder in CCSDPD Security Systems	Server back-up

### 2.0 DOCUMENT REVISION HISTORY:

Date	Rev.	Description of Revision
09-Sep-2010	B	Initial Release of the document

### 3.0 PROCESS OUTPUT:

3.1 Complete step-by-step instructions on how to install and use the GE NAV client for reviewing video..

### 4.0 THIS DOCUMENT APPROVED BY (Reference Document Control Form):

4.1 Director of Security Systems